

Windmere

— Come home to nature —





Where happiness resides

Like the warm rays of
the sun on a winter morning



In the midst
of nature
and an urban
space



	Madhyamgram Station/Upcoming Metro	1.5 kms
	Vishal Megamart	0.65 km
	Reliance Trends	0.7 km
	Julien Day School	4.8 kms
	Stem World School	9.8 kms
	St. Jude High School	2.8kms
	Research Centre Narayana Multispecialty Hospital	4.4 kms
	Kalyani Expressway	2.0 kms
	Sodepur Railway Station	6.0 kms
	Airport	10.0 kms
	Star Mall	4.4 kms
	City Mall	5.3 km



2 kms from
Kalyani Expressway

6 kms from Sodepur
Railway Station

10 kms from
Netaji Subhash Chandra Bose
International Airport

1.5 kms from Madhyamgram
Station/ Upcoming Metro

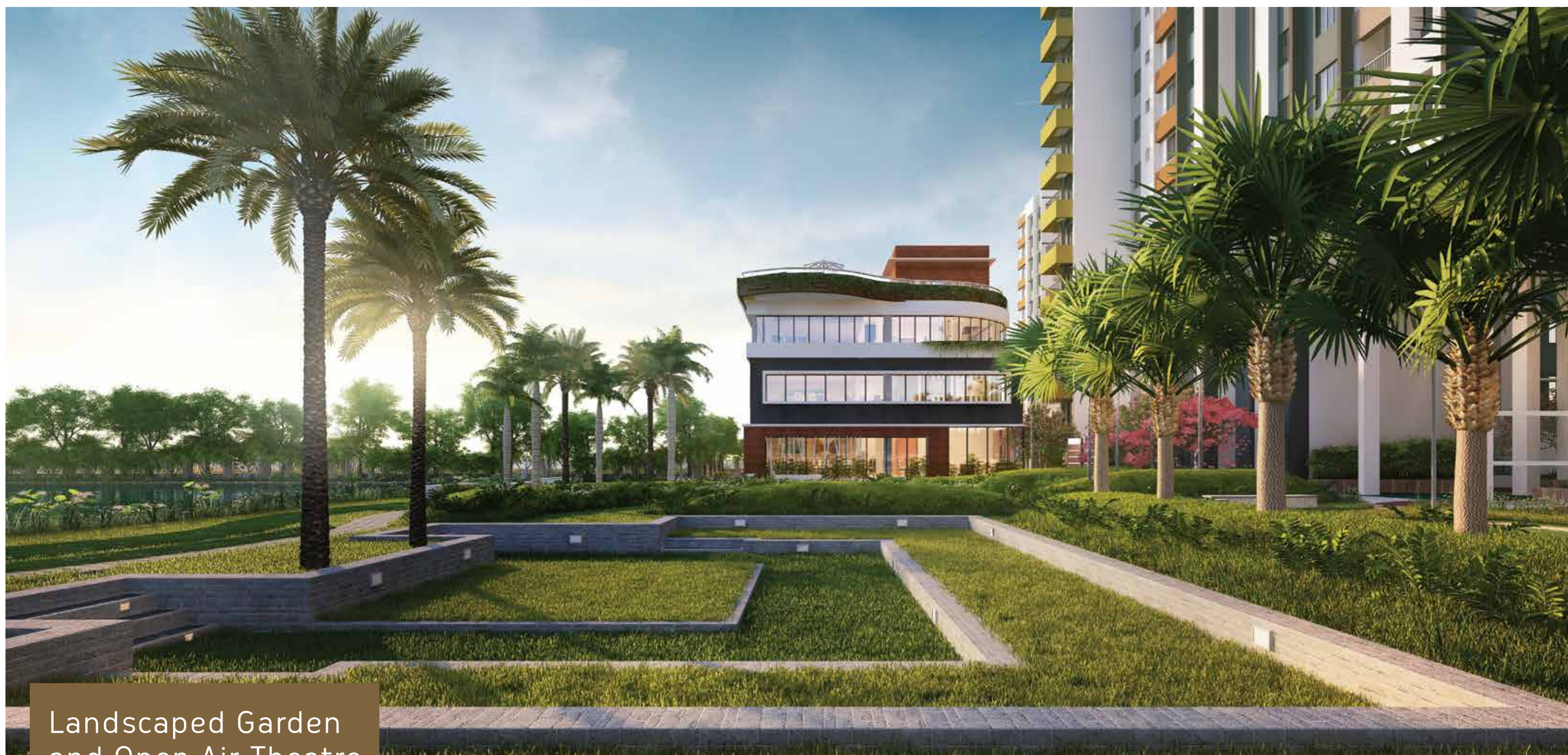
22 kms from Sector V

6 towers* | B+G+11 | 500 apartments* | 2/3/4 BHK

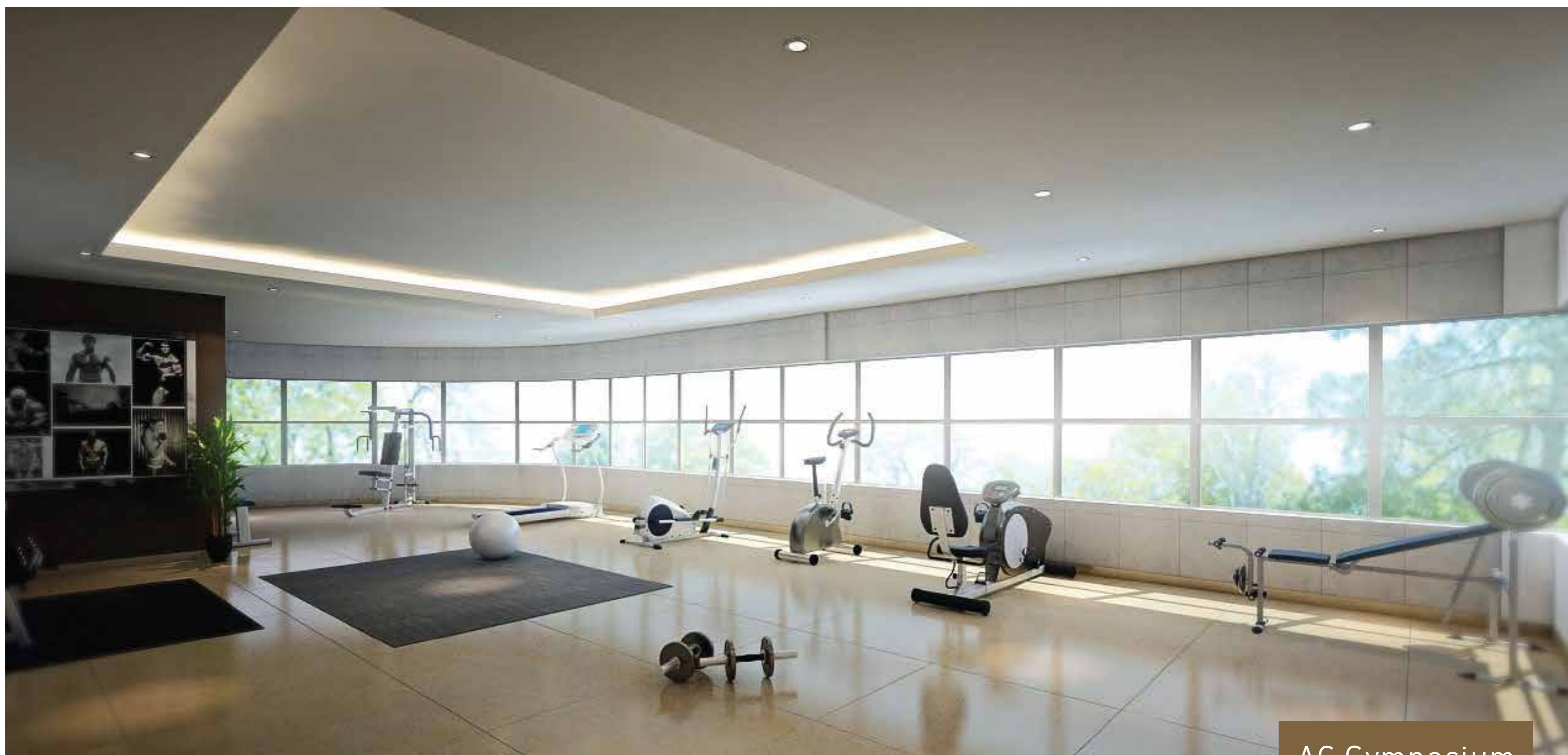
*The entire project is being developed in phases



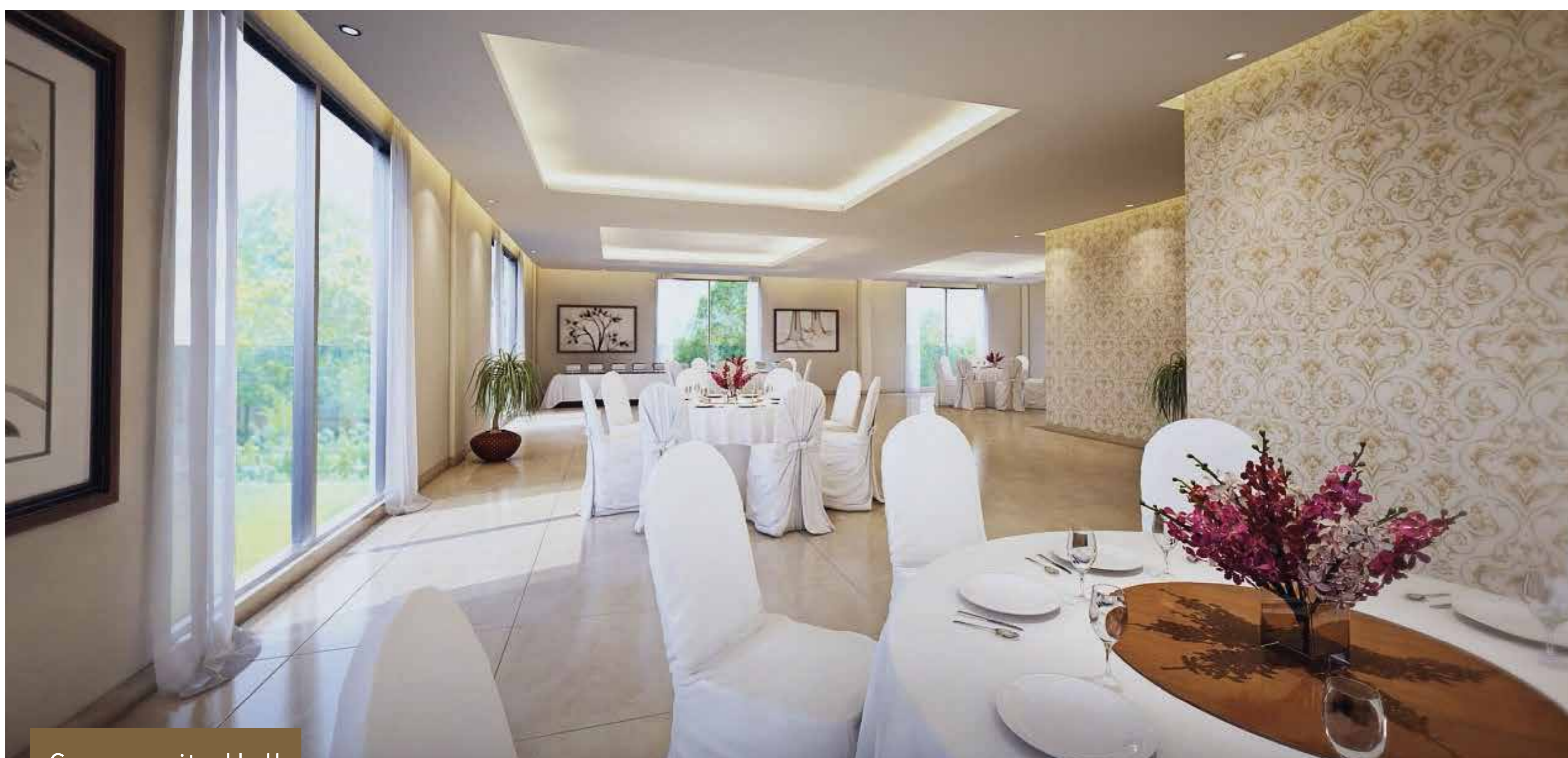
*The entire project is being
developed in phases



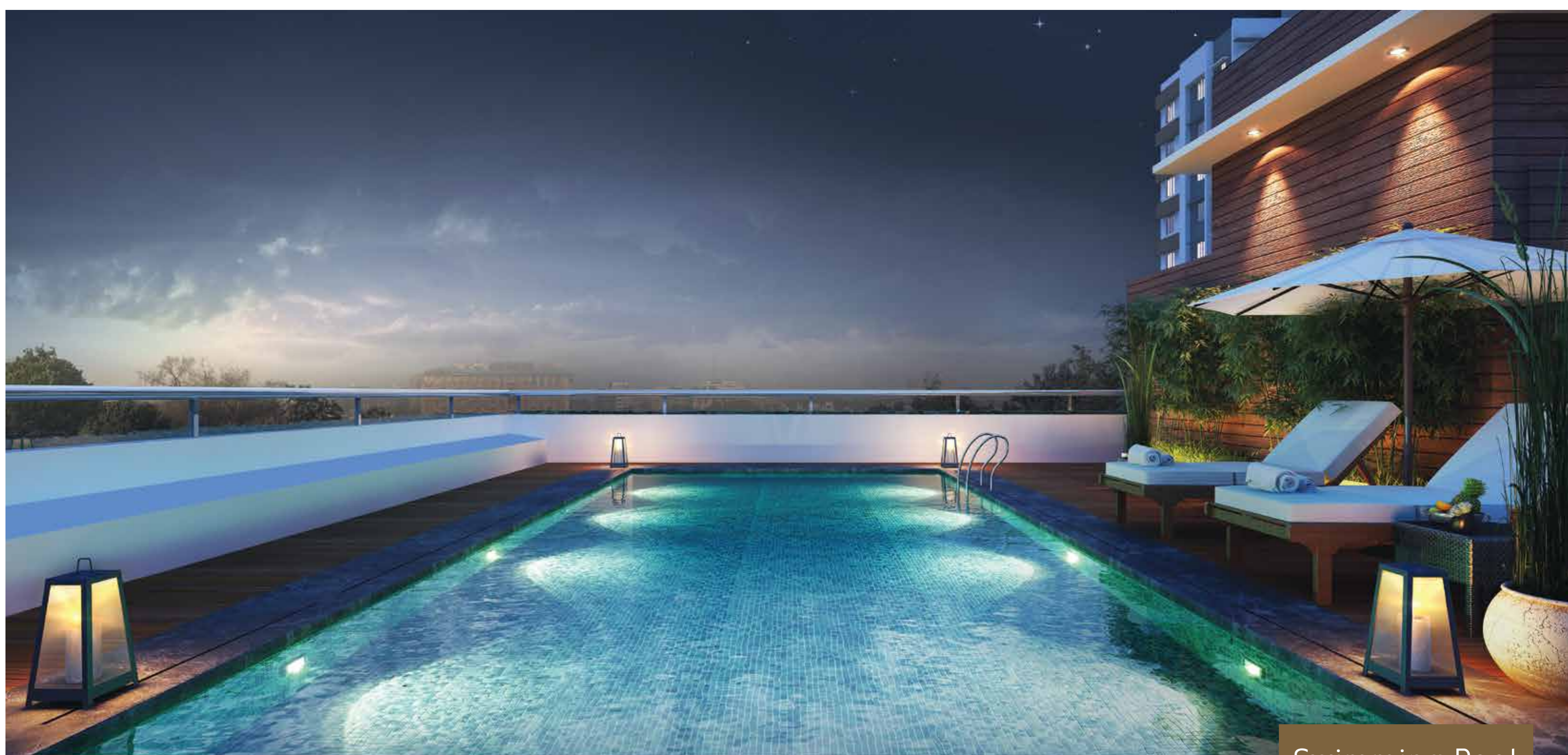
Landscaped Garden and Open Air Theatre



AC Gymnasium



Community Hall



Swimming Pool

Achieving wholeness with an evergreen living

- | | | | |
|--|---|---|--|
| <ul style="list-style-type: none">  Separate Club House#  Swimming Pool with Deck#  AC Gymnasium#  Steam Bath#  Two Community Halls#  Water Body with Lily Flowers#  Central Lawn* | <ul style="list-style-type: none">  Indoor Games Room#  Children's Play Area*  Open Air Theatre*  Walking Track*  Multi-purpose Grass Court*  Senior Citizens' Sitting Area*  Gazebo* | <ul style="list-style-type: none">  *Sitting Area at Landscape Garden*  Cafeteria*  Provision for Utility/Convenience Store*  24 Hours Security#  CCTV# | <ul style="list-style-type: none">  Intercom#  Fire Fighting#  Power Back up#  Solar Back Up#  Water Treatment Plant#  Sewerage Treatment Plant*  Rain Water Harvesting* |
|--|---|---|--|

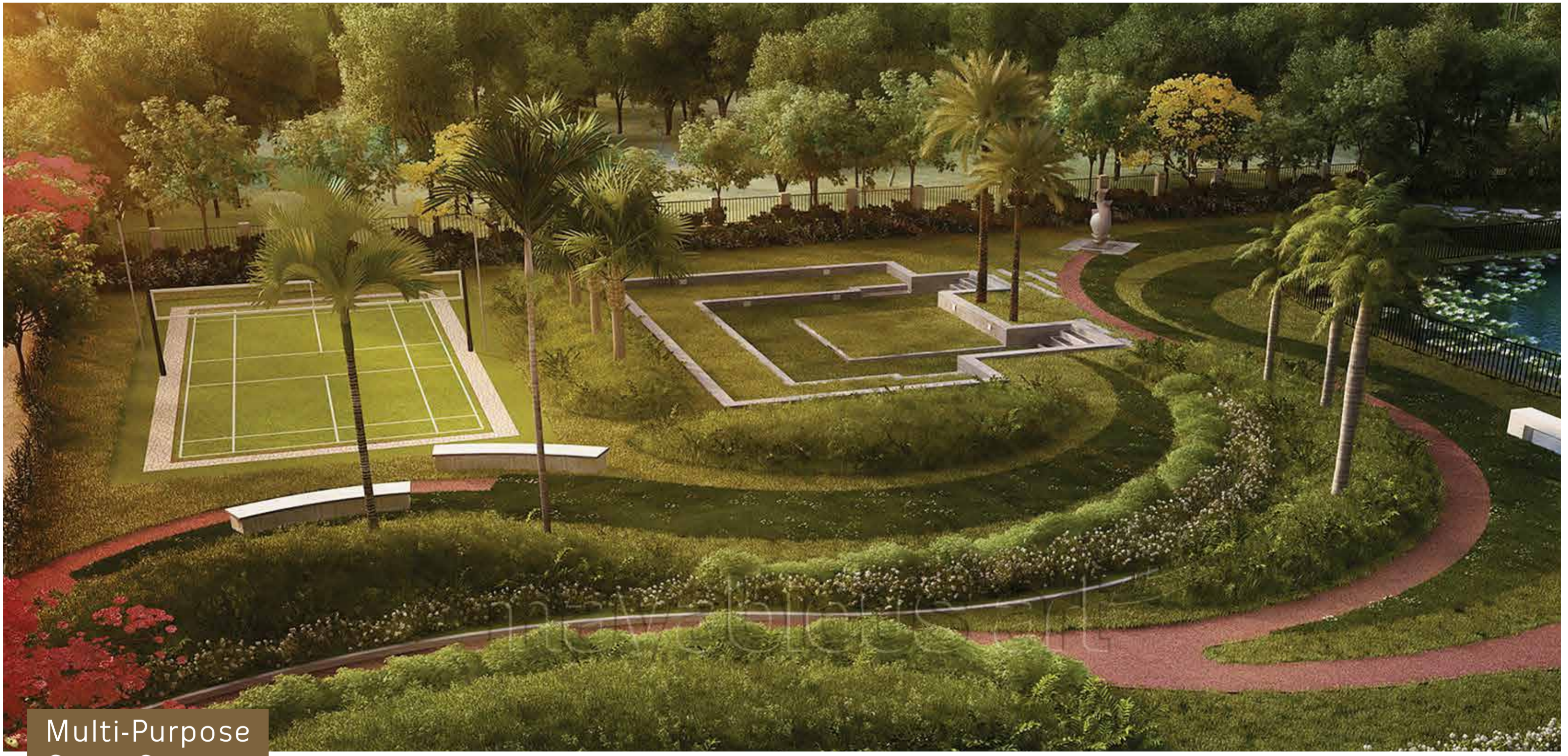
Amenities will be provided in Phase I * Amenities will be provided in Phases II
The entire project is being developed in phases



Central Garden



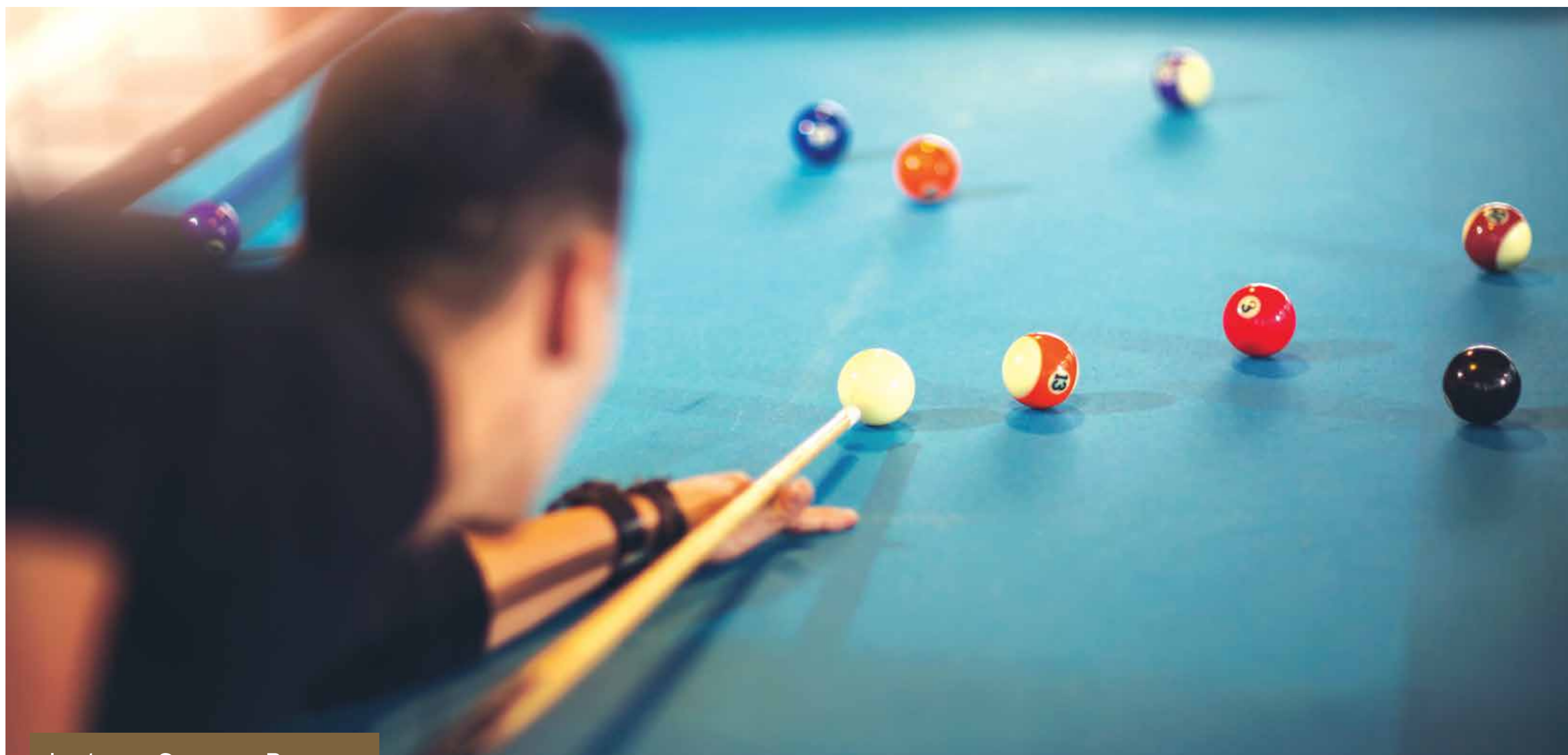
Landscaped Garden With Walking Track



Multi-Purpose Grass Court



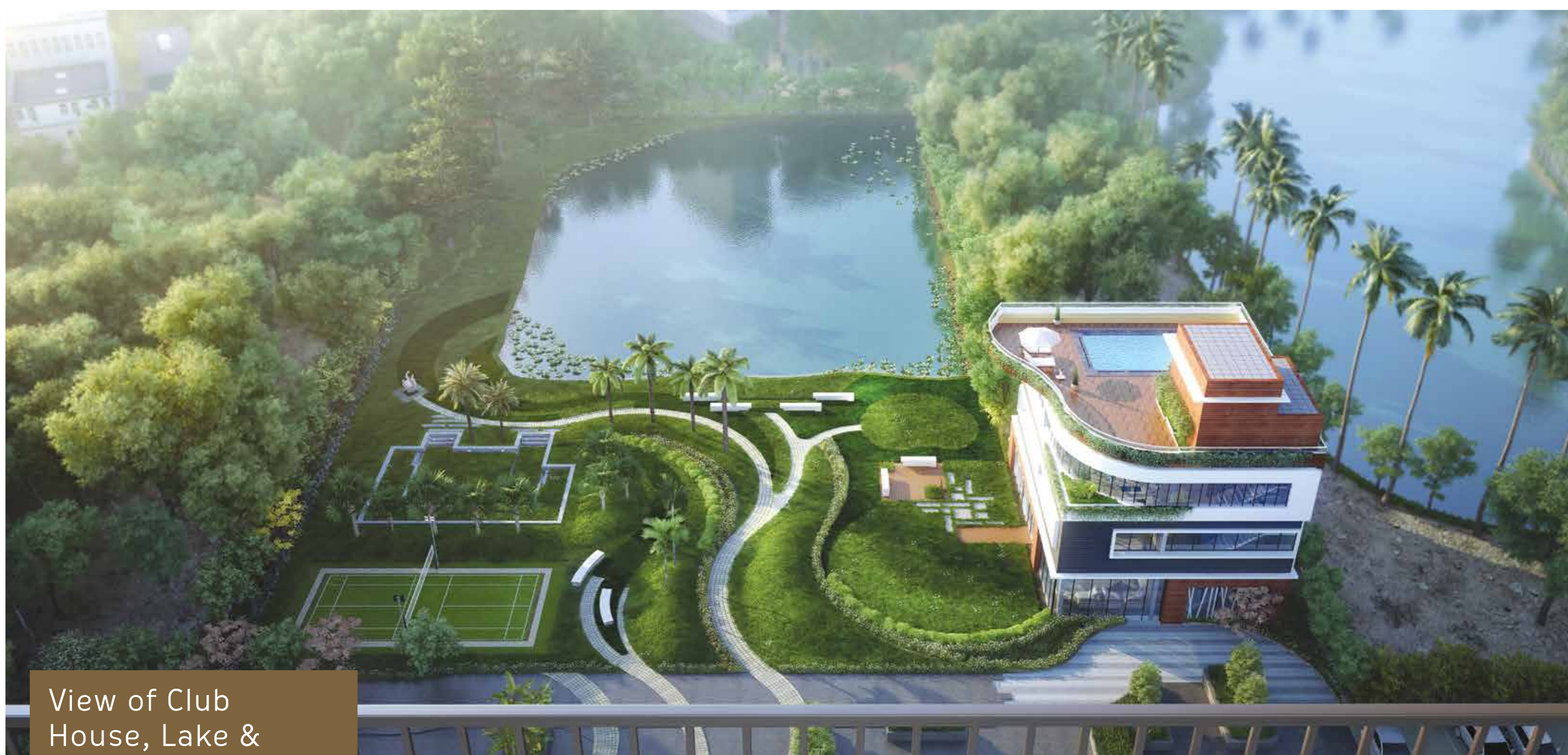
Natural Water Body with Lily Flowers



Indoor Games Room



Kids Play Area



View of Club House, Lake & Landscaped Garden



Water side view

1. Entry Gate*
2. Senior Citizen's Sitting Area*
3. Ramp to Basement*
4. Central Lawn*
5. Gazebo*
6. Children's Play Area*
7. Cafeteria*
8. Multi-Purpose Grass Court*
9. Sitting Area inside Landscape Garden*
10. Open Air Theatre*
11. Green Zone*
12. Lake with Lily Flowers*
13. Swimming Pool with Deck*
14. Clubhouse*
15. Paved Walking Track*
16. Landscape Garden*
17. Provisional Utility / Convenience Store*
18. Work from Home facility*

Amenities will be provided in Phase I
 * Amenities will be provided in Phases II

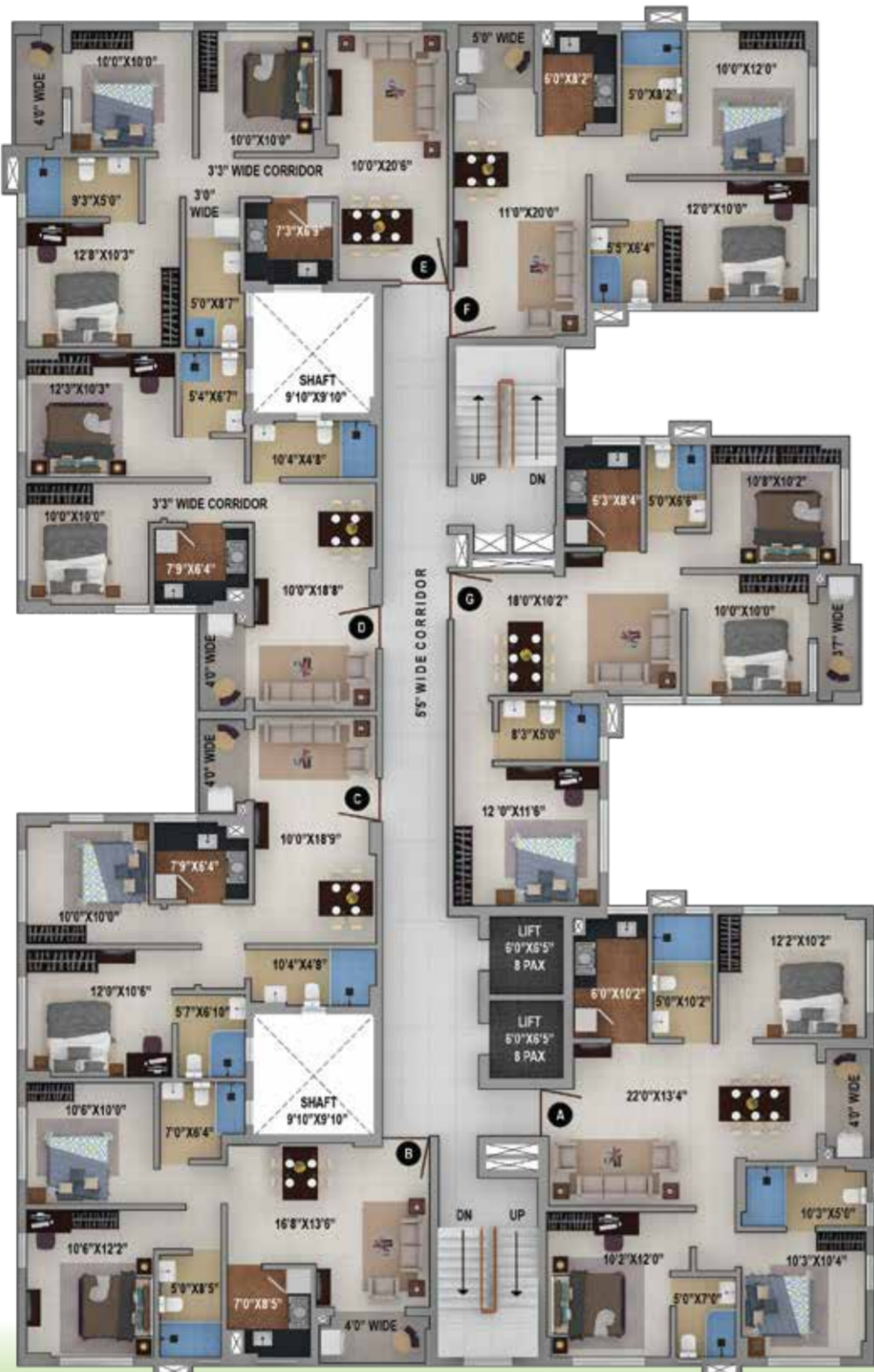
Phases-I



MASTER PLAN

Legends

- 2BHK + 2T
- 3BHK + 2T
- 3BHK + 3T
- 4BHK + 3T

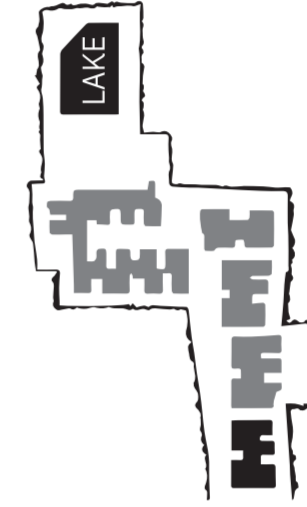


BLOCK-1

Typical Floor Plan

Flat	Type	Flat Carpet*	Balcony Carpet*	Built Up Total*	Chargeable Total*
A	3 BHK-3T	876	36	1004	1295
B	2BHK-2T	630	36	737	951
C	2BHK-2T	625	31	717	925
D	2BHK-2T	620	32	713	920
E	3 BHK-2T	771	39	876	1130
F	2BHK-2T	643	32	743	959
G	3 BHK-2T	737	36	860	1110

*Tentative area in sq.ft



BLOCK-2

Typical Floor Plan

Flat	Type	Flat Carpet*	Balcony Carpet*	Built Up Total*	Chargeable Total*
A	3 BHK-2T	753	36	878	1133
B	2BHK-2T	628	40	737	951
C	2BHK-2T	626	32	720	929
D	2BHK-2T	622	31	715	923
E	2 BHK-2T	637	39	746	963
F	3BHK-2T	759	48	888	1146
G	2 BHK-2T	620	43	740	955

*Tentative area in sq.ft

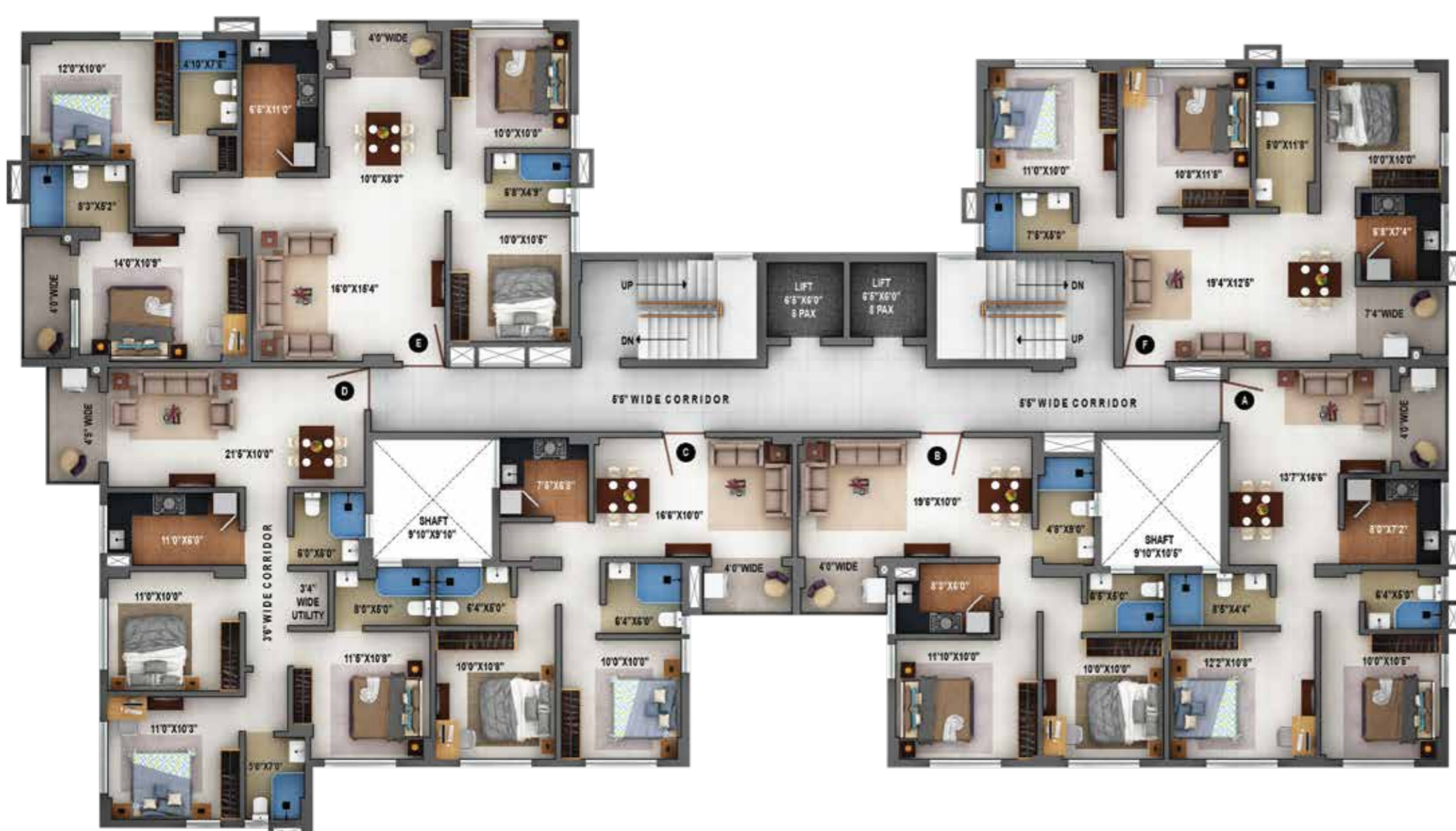


BLOCK-3

Typical Floor Plan

Flat	Type	Flat Carpet*	Balcony Carpet*	Built Up Total*	Chargeable Total*
A	3 BHK-3T	872.61	33.27	1004	1295
B	2BHK-2T	631.27	32.86	737	951
C	2BHK-2T	619.08	26.04	709	915
D	2BHK-2T	621.87	30.52	716	924
E	3 BHK-3T	829.24	31.77	938	1210
F	3BHK-3T	838.12	33.34	952	1228
G	3 BHK-3T	867.56	38.12	1004	1295

*Tentative area in sq.ft

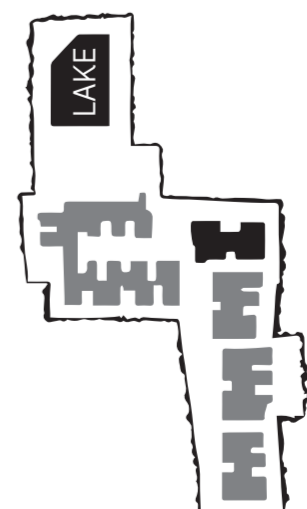


BLOCK-4

Typical Floor Plan

Flat	Type	Flat Carpet*	Balcony Carpet*	Built Up Total*	Chargeable Total*
A	2BHK-2T	612.10	31.54	709	915
B	2BHK-2T	603.56	26.40	693	894
C	2BHK-2T	580.72	27.54	674	870
D	3BHK-3T	864.26	37.58	977	1261
E	4BHK-3T	1114.86	73.27	1284	1657
F	3BHK-3T	774.23	41.58	894	1154

*Tentative area in sq.ft





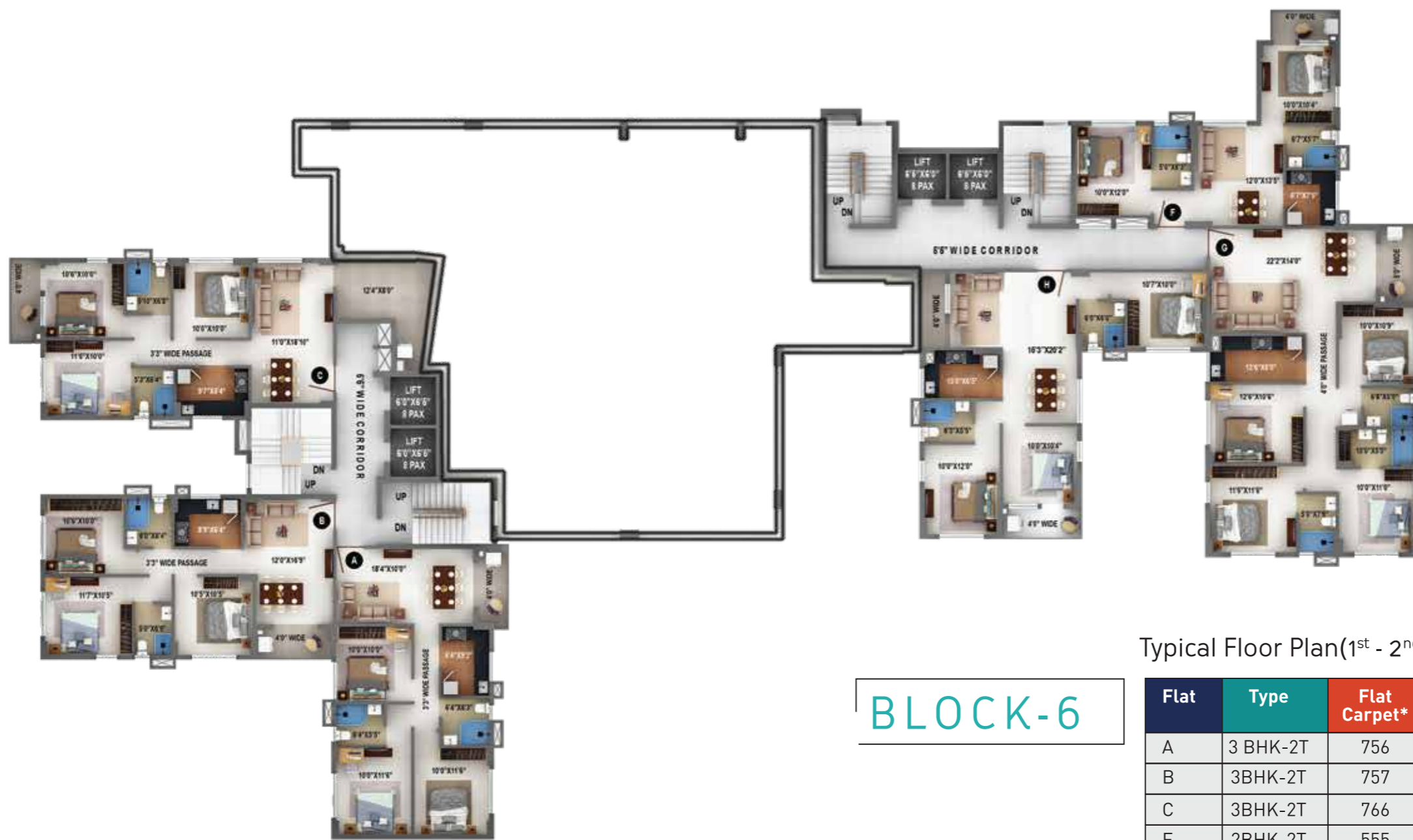
Typical Floor Plan(2nd-11th)*

BLOCK-5

Flat	Type	Flat Carpet*	Balcony Carpet*	Built Up Total*	Chargeable Total*
A	3BHK-2T	804.40	33.66	923	1191
B	3BHK-2T	805.91	34.79	923	1191
C	2BHK-2T	598.40	36.09	700	903
D	2BHK-2T	610.39	29.67	711	917
E	3BHK-2T	808.38	31.24	916	1182

Flat	Type	Flat Carpet*	Balcony Carpet*	Built Up Total*	Chargeable Total*
F	3BHK-2T	726.79	33.28	831	1072
G	2BHK-2T	618.60	37.30	735	948
H	3BHK-2T	772.52	29.12	877	1132
J	3BHK-3T	892.64	28.52	1001	1292
K	4BHK-3T	1096.95	37.30	1231	1588

*Tentative area in sq.ft

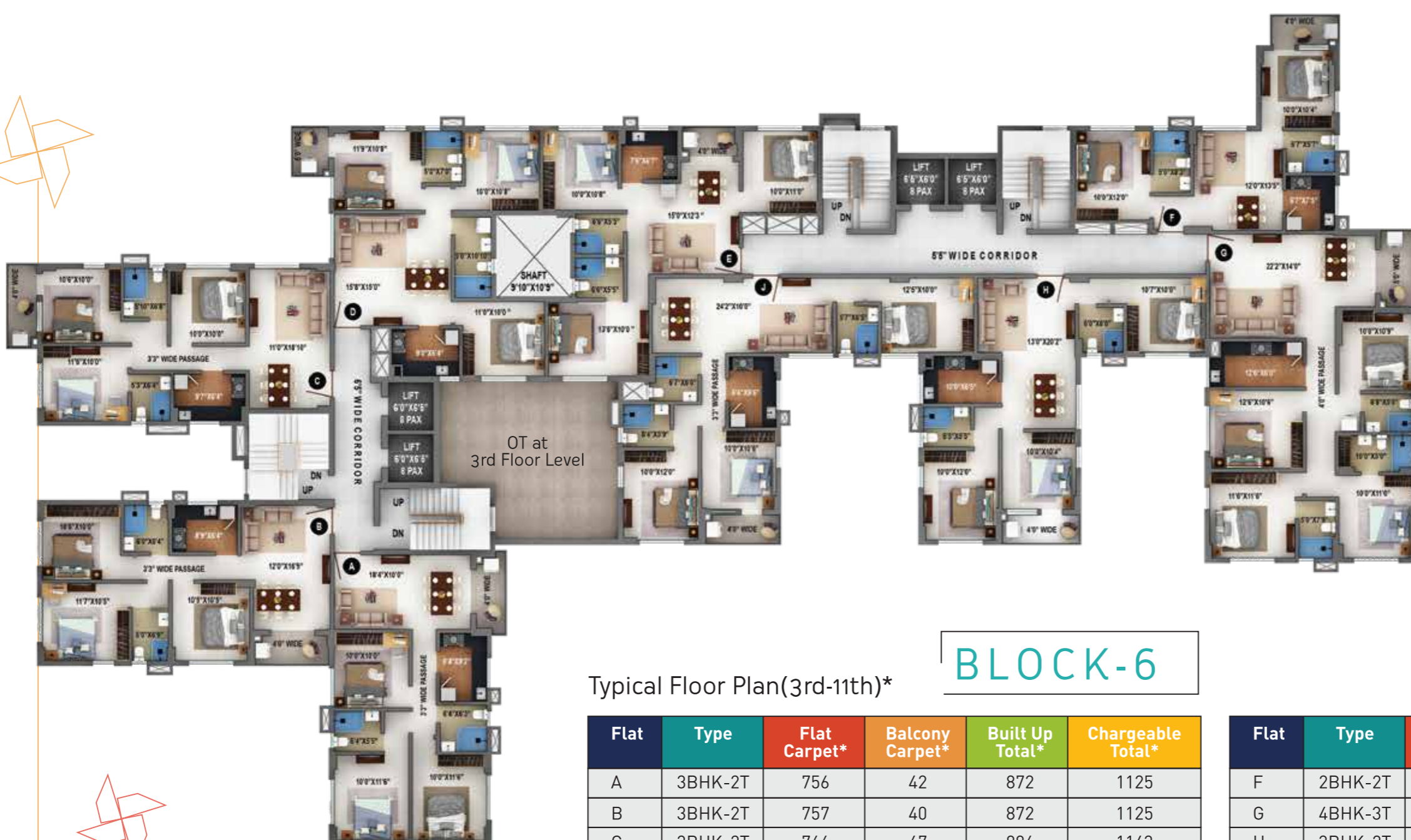


Typical Floor Plan(1st - 2nd)

BLOCK-6

Flat	Type	Flat Carpet*	Balcony Carpet*	Built Up Total*	Chargeable Total*
A	3 BHK-2T	756	42	872	1125
B	3BHK-2T	757	40	872	1125
C	3BHK-2T	766	174	1029	1328
F	2BHK-2T	555	38	660	852
G	4 BHK-3T	1122	53	1257	1622
H	3BHK-2T	801	82	971	1253

*Tentative area in sq.ft



Typical Floor Plan(3rd-11th)*

BLOCK-6

Flat	Type	Flat Carpet*	Balcony Carpet*	Built Up Total*	Chargeable Total*
A	3BHK-2T	756	42	872	1125
B	3BHK-2T	757	40	872	1125
C	3BHK-2T	766	47	886	1143
D	3BHK-2T	775	35	885	1142
E	3BHK-2T	714	29	821	1059

Flat	Type	Flat Carpet*	Balcony Carpet*	Built Up Total*	Chargeable Total*
F	2BHK-2T	555	38	660	852
G	4BHK-3T	1122	53	1257	1622
H	3BHK-2T	767	43	889	1147
J	3BHK-3T	874	41	997	1286

*Tentative area in sq.ft

Developers
SIGNUM
LIVE ONCE, LIVE SIGNUM.

 **unimark**TM
Powered by Imagination

Member of
CREDAI
BENGAL

Heritage Regency Developers LLP

Correspondence Address: 3A, Auckland Place, 10th Floor
Unit 10B, Kolkata 700 017

9835 180 180

Site Address: Opposite APC College, Sajerhat
Sodepur Road, Kolkata 700 110
www.signumgroup.in

The entire project is being developed in phases
WB HIRA REGISTRATION NO. PHASE – I/HIRA/P/NOR/2018/000204 | hira.wb.gov.in
PHASE – II/HIRA/P/NOR/2020/001009