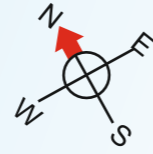


vindhya
primrose 
the eternal spring life

*blooming
&
spreading
fragrance*

LOCATION MAP



SITE : 165, Dr. B. C. Roy Road, Rajpur, Kolkata

Lions Kolkata Vidya Mandir	05 Minute
B. D. Memorial	07 Minutes
Ram Krishna Mission	08 Minutes
Kavi Nazrul Metro	10 Minutes
Shahid Khudiram Metro	10 Minutes
Garia Railway Station	15 Minutes
Wood Square Mall	08 Minutes
Metropolis Mall	10 Minutes
Peerless Hospital	12 Minutes
R N Tagore Hospital	15 Mniutes



Spring brings freshness in nature, new leaves, new flowers... the whole atmosphere looks in total bliss.

At Vindhya Primrose, your daily life is enveloped in spring. With like minded society, less crowded units, updated features and away from city's hustle-bustle yet close to main city, Vindhya Primrose makes your living happy and peaceful.



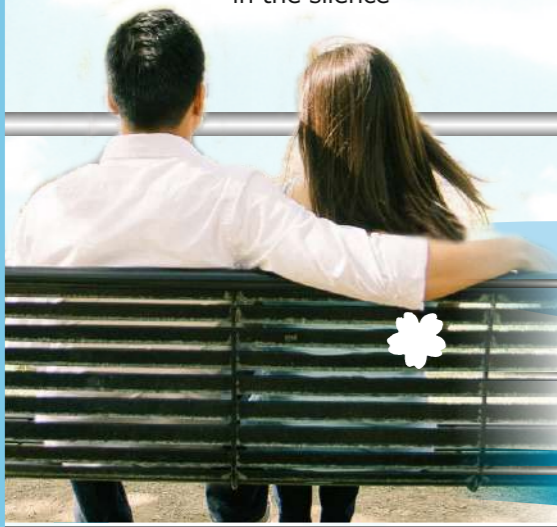
Fly
in the sky



Stroll
Brisk Walk
Run



Breathe
the fragrant air



Talk
in the silence



Tranquil Terrace admire the beautiful ambience

The terrace is a treat. The arrangement of Sit-outs, Kids Play Area, Jogging Track, Yoga & Meditation Zone, Party/Celebration Zone, Multi-purpose Court take you directly to a pleasant experience. A brief walk in the Zen Garden will provide a sense of contentment and a feeling of spring around you all the time.

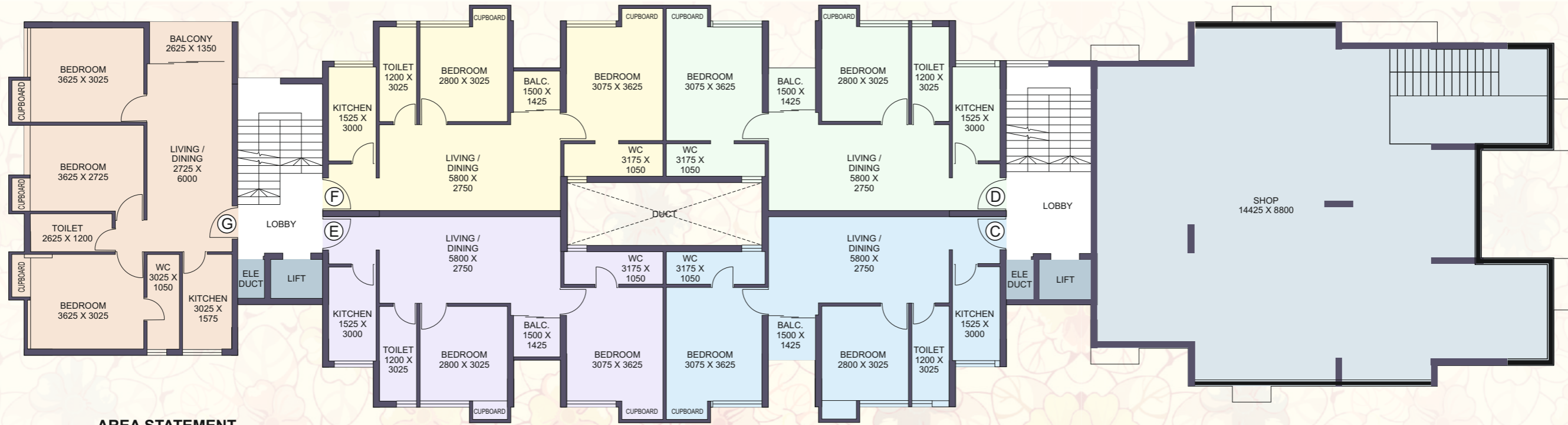


Your
Dream Home
is now reality



Internal Specifications

FOUNDATION	Earthquake resistant reinforced concrete cement structure
EXTERNAL WALL	All guard water proof base paint
INTERNAL WALL	Wall Putty
DOORS	Main Door - Flush door with one side teak finish Main door fittings Internal Doors - Flush doors with oil paint
WINDOWS	Anodized aluminium sliding windows Grill option at extra cost
FLOORING	Vitrified tiles in entire flat Kitchen & Toilet with anti-skid Ceramic tiles Staircase with half landing granite balance kota/marble Lobby with Vitrified tiles Lift fascia of Granite tiles
KITCHEN	Granite counter Stainless steel sink Dado of Ceramic tiles upto 3 ft. above the counter platform Electrical point for refrigerator, water purifier, microwave chimney or exhaust fan
TOILET	Dado glazed tiles on the walls upto door level Premium quality sanitary and CP fittings (reputed make) Electrical point for geyser and exhaust fan Plumbing provision for hot/cold water line
ELECTRICALS	Concealed copper wiring with central MCB (reputed make) Modular switches (reputed make) Sufficient number of plug points Provision for split AC points Provisions for cable TV, telephone + broadband wiring Door bell point at main entrance
LIFT	5 passenger semi-automatic (reputed make)



AREA STATEMENT
(1st Floor Plan)

Flat	BHK	Carpet Area	Balcony Area	Built up Area	S. Built up Area
C	2	576	23	663	861
D	2	576	23	663	861
E	2	576	23	663	861
F	2	576	23	663	861
G	3	702	38	810	1052

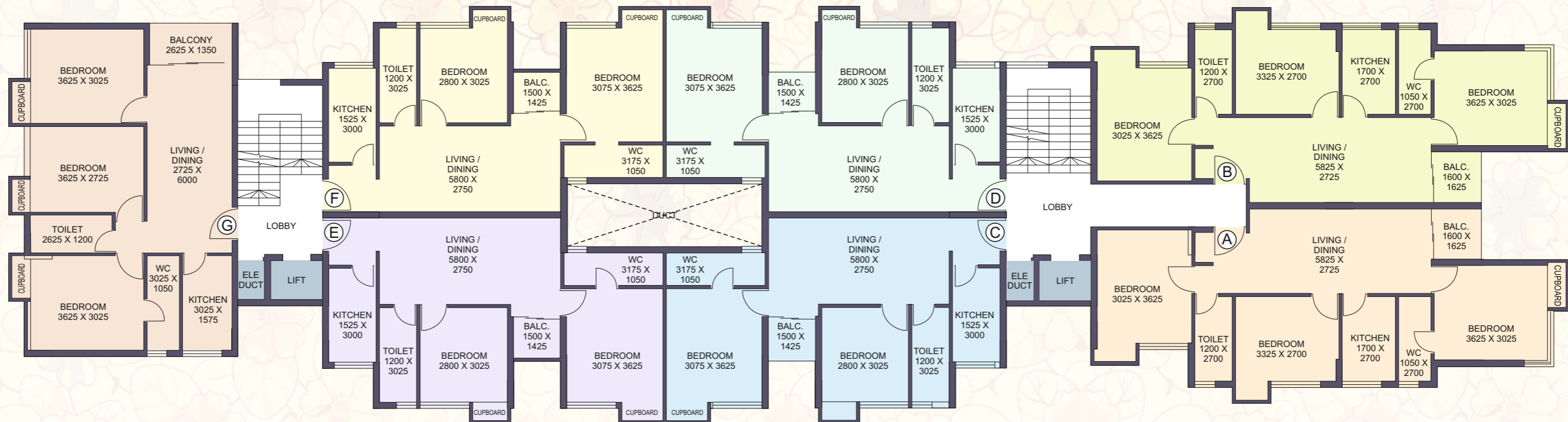
1ST FLOOR PLAN



AREA STATEMENT
(2nd to 4th Floor)

Flat	BHK	Carpet Area	Balcony Area	Built up Area	S. Built up Area
A	3	703	28	806	1047
B	3	704	28	806	1047
C	2	576	23	663	861
D	2	576	23	663	861
E	2	576	23	663	861
F	2	576	23	663	861
G	3	702	38	810	1052

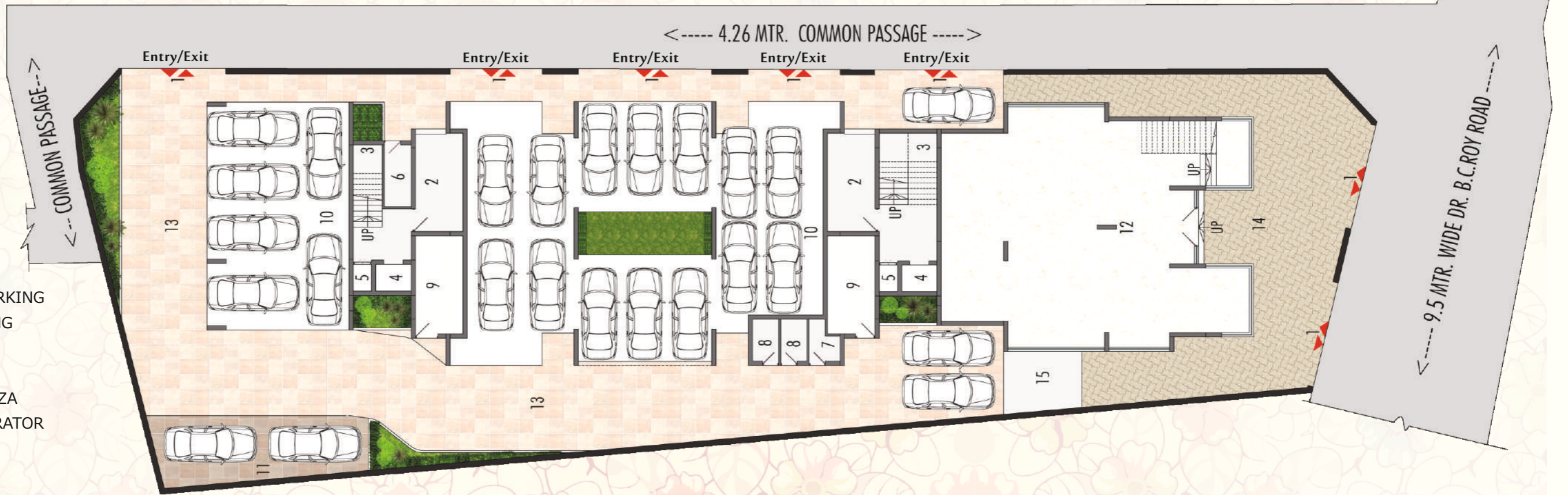
TYPICAL FLOOR PLAN
(2nd to 4th Floor)



GROUND FLOOR PLAN



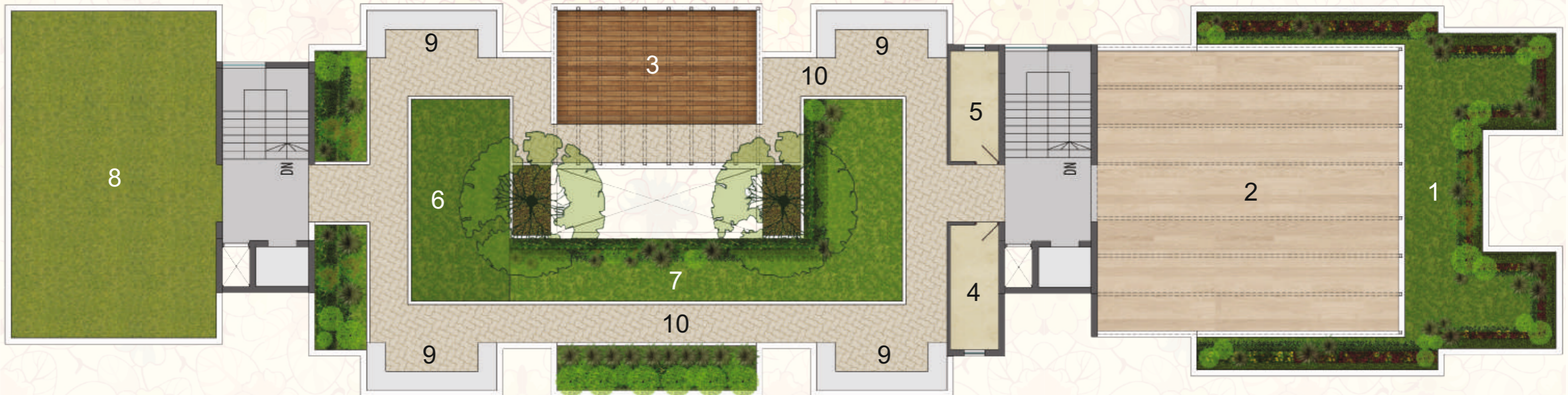
1. GATE
2. VISITORS LOUNGE
3. STAIRS FOR RESIDENTIAL AREA
4. LIFT
5. ELECTRICAL DUCT
6. ELECTRICAL PANEL ROOM
7. TOILET
8. TOILET
9. COMMON ROOM
10. COVERED CAR PARKING
11. OPEN CAR PARKING
12. SHOWROOM
13. DRIVEWAY
14. COMMERCIAL PLAZA
15. SPACE FOR GENERATOR



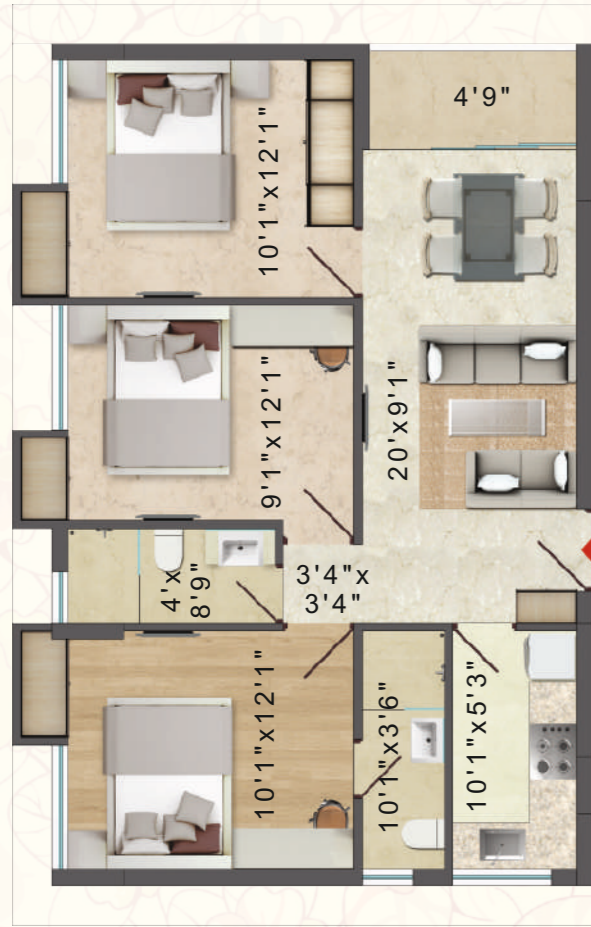
ROOF PLAN



1. TURF
2. CELEBRATION COURT
3. YOGA DECK WITH RETRACTABLE ROOF
4. LADIES TOILET
5. GENTS TOILET
6. CHILDREN'S PLAY COURT
7. TURF/ZEN GARDEN
8. MULTI COURT
9. SITTING PLAZA
10. WALKING TRAIL



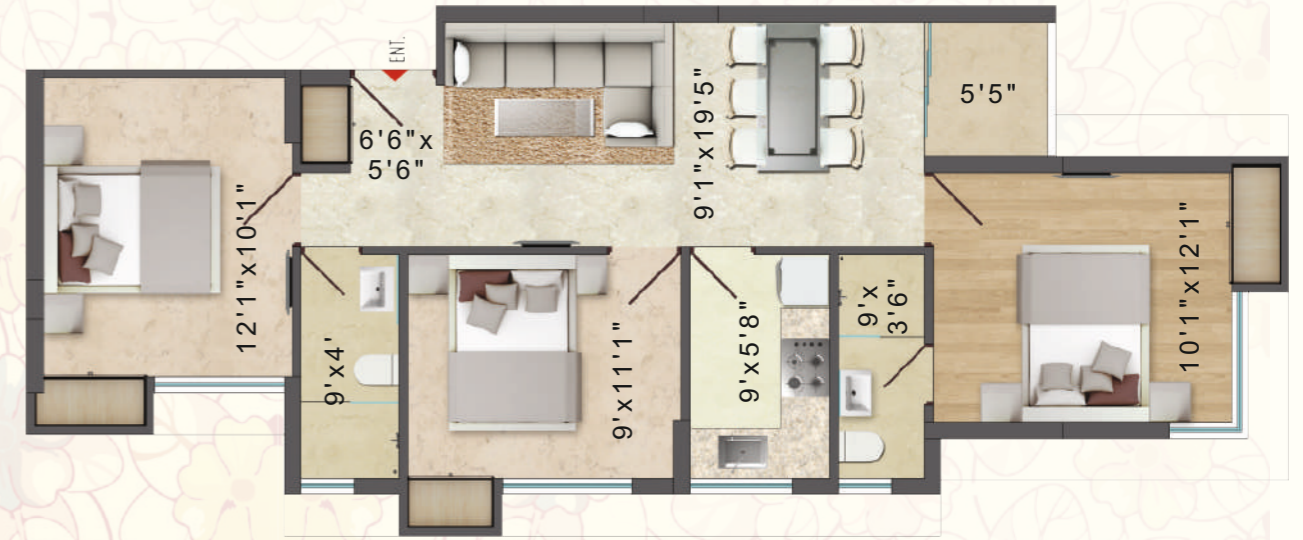
3D FURNITURE LAYOUT



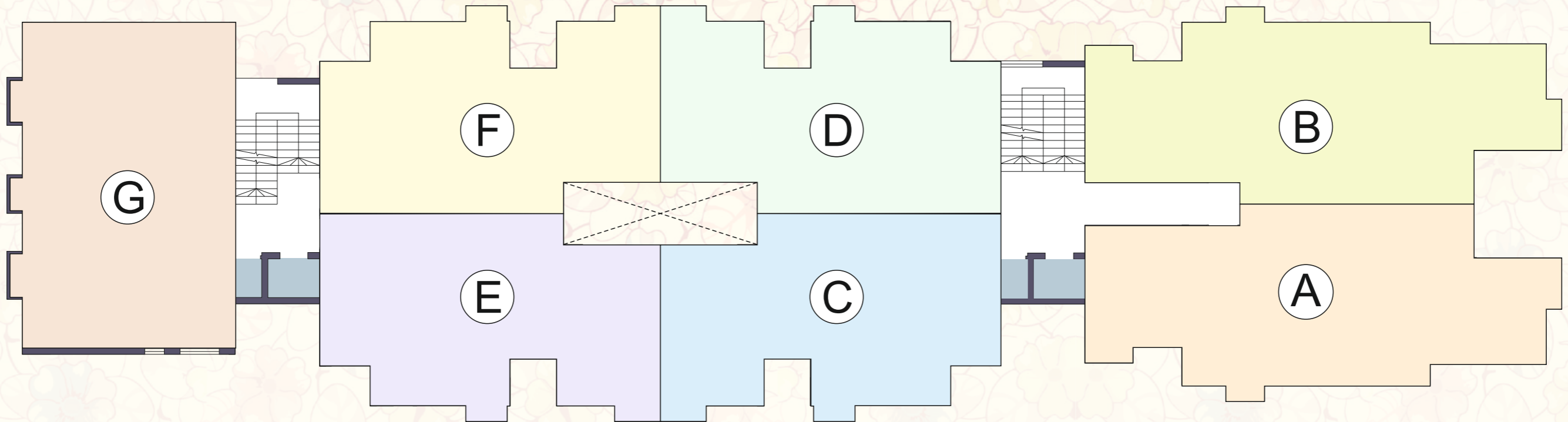
Flat G & H



Flat C, D, E, F



Flat A & B



Touching hearts through trust and commitment

Vindhya Group has been at the forefront of real estate development for more than a decade. The projects undertaken by the group have a highly evolved value-added positioning. Every project is well conceived to give you the best in high-quality living. With a team as strong as the pillars of their projects, comprising of civil engineers, quality assurance supervisors and other business heads with a wide range of experience in their respective fields, Vindhya Group makes your home-buying experience pleasant, memorable and effortless.

Vindhya Group was formed by our Chairman, Mr. R. S. Agarwal, with a vision to build an organization on the foundation of quality, Reliability, Trust and Gratitude. With over more than 15 years of experience in the real estate industry, Mr. Agarwal has had a significant impact on the landscape of housing in Kolkata, helping his customers find their humble abodes.



Vindhya Serenity
Kasba, Off RB Connector



Vindhya Synergy
Prince Anwar Shah Road



Shakuntala Garden
VIP Bazaar, Off EM Bypass



Vindhya Heights
Kasba, Off RB Connector



Tirupati Niwas
Near New Alipore

EXPERIENCE THE SOUND OF NATURE
AMIDST PEACE AND SERENITY





PROJECT BY



Commitment to Reliability

40/1, Prince Anwar Shah Road

Kolkata - 700 033

Phone : (033) 4803 9711

www.vindhyairealty.com

Developers

Animesh Nirman LLP

Reg. Office :

40/5 Strand Road, Kolkata - 700 001

Administrative Office :

40/1 Prince Anwar Shah Road, Kolkata - 700 033

Email : vindhyaprimrose@gmail.com

Architect

Shayan De

16B, Maharaja Nand Kumar Road

Kolkata - 700 029

Enquiries : 90 73 97 4181

This brochure is not a legal document. It describes the conceptual plan and intent of Vindhya Primrose. Images shown in this brochure are tentative and may not resemble the actual. The developer reserves the right to change the layout plan and other details.